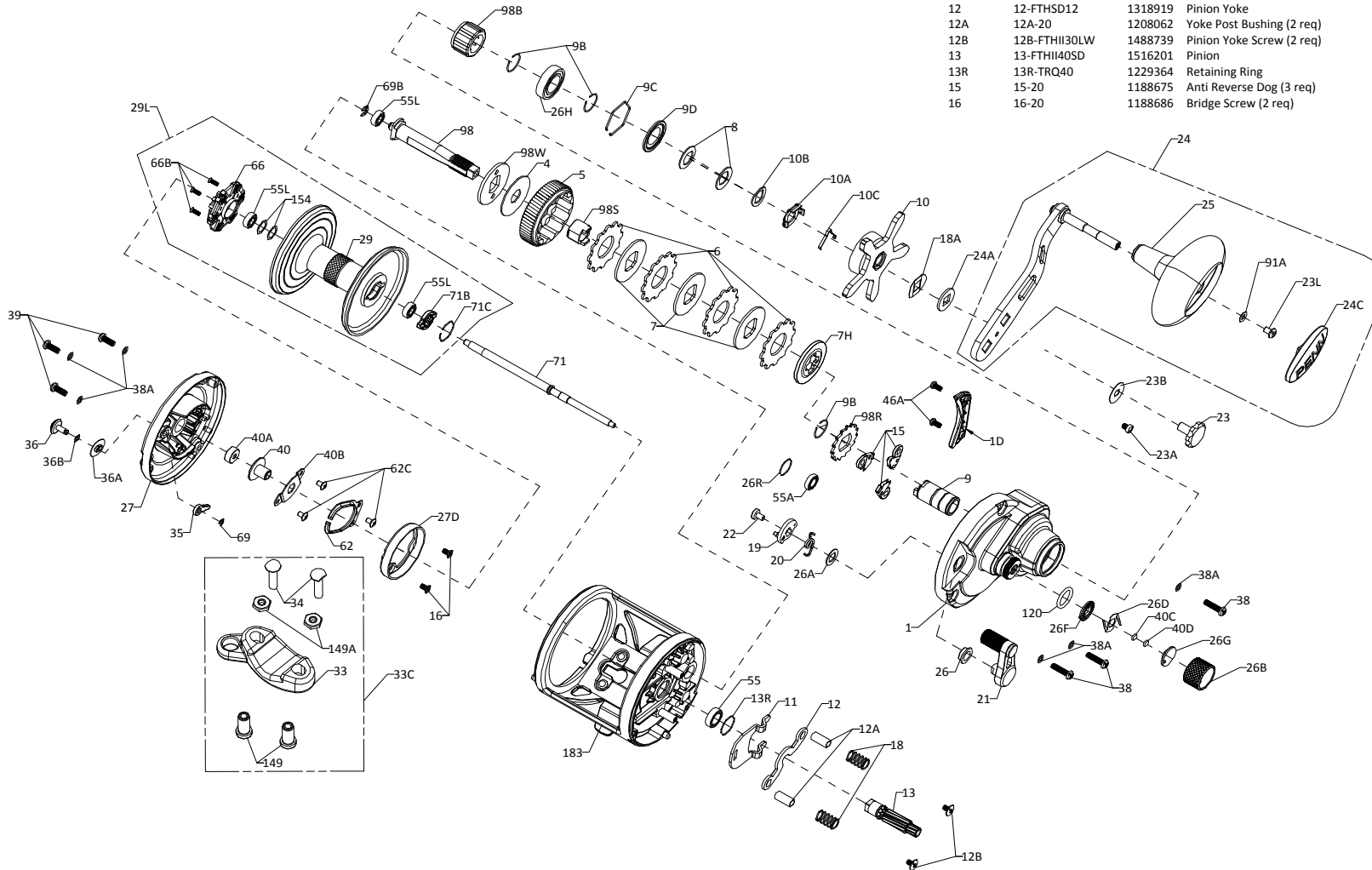




PARTS LIST FATHOM II 25NSD, 30SD and 40SD

REEL PART NO. 1505234(25NSD) , 1505236(30SD) and 1505238(40SD)



Key No.	Penn Style No.	Part No.	Description
1	1-FTHII25NSD	1516176	Right Side Plate Assembly
1	1-FTHII30SD	1516186	Right Side Plate Assembly
1	1-FTHII40SD	1516197	Right Side Plate Assembly
1D	1D-FTHII40SD	1516198	Gearbox Cover
4	4-FTHII30LW	1488726	Drag Washer
5	5-FTHII40SD	1516199	Main Gear
6	6-TRQ40	1237037	Drag Washer Tab (4 req)
7	7-FTHII12SD	1516068	Keyed Metal Drag Washer (3 req)
7H	7H-FTHII12SD	1516139	Heavy Metal Drag Washer
8	8-20	1188709	Spring Washer (2 req)
9	9-FTHII40SD	1516200	Spacer Sleeve
9B	9B-FTHII30LW	1488732	Retainer Ring (3 req)
9C	9C-FTHII30LW	1488733	Retainer Ring
9D	9D-FTHII30LW	1488734	Bearing Cover
10	10-FTHII30LW	1488735	Star Drag (Gunsmoke)
10A	10A-20	1188711	Star Click Retainer
10B	10B-20	1188710	Star Click Washer
10C	10C-525MAG2	1188712	Star Click Spring
11	11-FTHSD25N	1242818	Eccentric Jack
12	12-FTHSD12	1318919	Pinion Yoke
12A	12A-20	1208062	Yoke Post Bushing (2 req)
12B	12B-FTHII30LW	1488739	Pinion Yoke Screw (2 req)
13	13-FTHII40SD	1516201	Pinion
13R	13R-TRQ40	1229364	Retaining Ring
15	15-20	1188675	Anti Reverse Dog (3 req)
16	16-20	1188686	Bridge Screw (2 req)

Key No.	Penn Style No.	Part No.	Description
18	18-20	1188688	Pinion Yoke Spring (2 req)
18A	18A-20	1188714	Keyed Spring Washer
19	19-20	1188691	Eccentric
20	20-FTHSD12	1242806	Eccentric Spring
21	21-FTHII40SD	1516202	Eccentric Lever (Gunsmoke)
22	22-20	1188690	Eccentric Screw
23	23-FTH20LW	1208117	Handle Screw
23A	23A-20	1188717	Handle Lock Screw
23B	23B-20	1207784	Handle Screw Washer
23L	23L-750	1191283	Screw
24	24-20	1188716	Handle Assembly
24A	24A-20	1188715	Handle Thrust Washer
24C	24C-66	1191335	Cap- Handle Knob
25	25-TRQ40	1240293	Handle Knob
26	26-20	1188692	Bushing
26A	26A-FTHSD12	1242792	Washer
26B	26B-FTHII30LW	1488746	Spool Tension Knob (Gunsmoke)
26D	26D-525MAG2	1125769	Click Spring
26F	26F-525MAG2	1125768	Click Plate A
26G	26G-525MAG2	1125772	Click Plate B
26H	26-TRQ40NLD2	1260523	Ball Bearing
26R	26R-525MAG2	1214654	Ring Retaining
27	27-FTHII25NSD	1516177	Left Side Plate Assembly
27	27-FTHII30SD	1516187	Left Side Plate Assembly
27	27-FTHII40SD	1516203	Left Side Plate Assembly
27D	27D-FTHSD12	1242794	Centrifugal Brake Path
29	29-FTHII25NSD	1516178	Spool (Gunsmoke/Gold)
29	29-FTHII30SD	1516188	Spool (Gunsmoke/Gold)
29	29-FTHII40SD	1516204	Spool (Gunsmoke/Gold)
29L	29L-FTHII25NSD	1516179	Spool Assembly
29L	29L-FTHII30SD	1516189	Spool Assembly
29L	29L-FTHII40SD	1516205	Spool Assembly
33	33-113	1182754	Rod Clamp
33C	33C-TRQ40	1229936	Rod Clamp Kit
34	34-45	1182788	Screw, Rod Clamp (2 req)
35	35-20	1188656	Alarm Pawl
36	36-FTHSD25N	1242819	Click Button
36A	36A-FTH20LW	1208113	Click Washer
36B	36B-20	1188651	Washer
38	38-20	1188698	Screw (3 req)
38A	38A-20	1188649	Flat Washer (6 req)
39	39-20	1188638	Screw (3 req)
40	40-TRQ40	1230004	Bushing L. S. Spool
40A	40A-FTHSD12	1242804	Bearing
40B	40B-FTHSD12	1242805	Protector Bearing
40C	40C-525MAG2	1208115	Washer, Friction
40D	40D-525MAG2	1125771	Washer, Rubber Thrust
46A	46A-FTHII30LW	1488755	Cover Plate Screw (2 req)
55	55-525MAG2	1214665	Ball Bearing
55A	55A-525MAG2	1214666	Ball Bearing
55L	55L-965	1192031	Bearing Spool (3 req)
62	62-20	1188664	Click Spring
62C	62C-20	1188654	Screw (3 req)
66	66-FTHSD12	1242797	Centrifugal Brake
66B	66B-FTHSD12	1242798	Screw (3 req)
69	69-20	1188657	Retainer
69B	69B-600	1184129	Ring Retaining
71	71-FTHII25NSD	1516180	Spindle
71	71-FTHII30SD	1516191	Spindle
71	71-FTHII40SD	1516207	Spindle
71B	71B-FTHII30SD	1516190	Spool Driver
71C	71C-TRQ40	1230227	Retaining Ring
91A	91A-TRQ40NLD2	1277514	Handle Knob Washer
98	98-FTHII40SD	1516208	Main Gear Shaft
98B	98B-FTHII30LW	1488764	1AR Bearing
98R	98R-FTHII30LW	1488765	Ratchet
98S	98S-FTHII40SD	1516209	Gear Stud Bushing
98W	98W-FTHII30LW-1	1516218	Thrust Washer
120	120-113H	1184522	O-Ring
149	149-45	1184702	Rod Clamp Nut (2 req)
149A	149-200	1184706	Hex Nut (2 req)
154	154-FTHSD12	1242803	Shim (As Needed)
183	183-FTHII25NSD	1516181	Frame Assembly
183	183-FTHII30SD	1516192	Frame Assembly
183	183-FTHII40SD	1516210	Frame Assembly

407-FTHII25NSD-40SD Rev.0 7-4-19  
1516221

**WARNING:** Cancer and Reproductive Harm – [www.P65Warnings.ca.gov/products](http://www.P65Warnings.ca.gov/products)